

# Arcam ST60 Streamer URC Driver

## Release Notes

Current Version: 1.0.0.9

## Introduction

This driver has been designed to provide two-way control of Arcam ST60 Streamer via TCP/IP and RS232. The models supported are:

- ST60

The driver provides the the following features:

- Source selection
- Transport controls for relevant sources
- Volume and mute control
- Now playing metadata for relevant sources
- One-way commands for various settings:
  - Display brightness
  - Simulate RC5 IR Command
  - Room Equalisation
  - Balance
  - DAC Filter
  - Maximum Turn On Volume
  - Maximum Volume
  - Source
  - Auto Shutdown

## Arcam ST60 Configuration

It is recommended that the ST60 be installed, configured and tested by a suitably qualified engineer, according to Arcam's documentation, prior to integration with this driver.

This driver was tested with firmware version: 0.51.

## Driver Installation

A single driver file is included in the release package:

Driver File Name	Description
Arcam_ST60_v1.0.0.9.tcm2	This file contains driver files to control the device.

The current version included is Arcam\_ST60\_v1.0.0.9.tcm2.

## Adding to Accelerator

Open your existing TC2 System file in URC Accelerator and then import the Arcam\_ST60\_v1.0.0.9.tcm2 file:

- Choose File -> Import TCM File
- In the Total Control Module Library Import window, locate the Arcam\_ST60\_v1.0.0.9.tcm2 file and click **Open**.
- From the **Import Total Control Module window that appears**, choose **Import**.

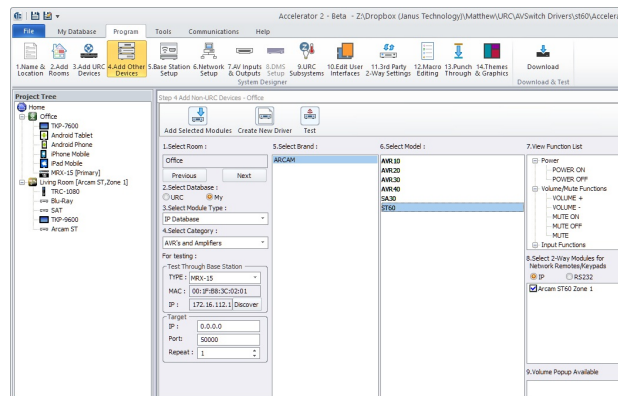
Once the driver has been imported, close URC Accelerator and then reopen it to ensure that the driver has been picked up properly by the driver database.

## Adding the Driver

To add the driver:

- Select a room to place the driver
- Choose **Program -> 4. Add Other Devices**.
- Ensure **Select Database** is set to **My**.
- Ensure that **Select Module Type** is set to **IP Database**.
- Set Select Category to **AVR's and Amplifiers**.
- Choose **Arcam** from the **Select Brand** list.

- From the **Select Model** choose **ST60**.
- Click **Add Selected Modules** to add the device to the room.



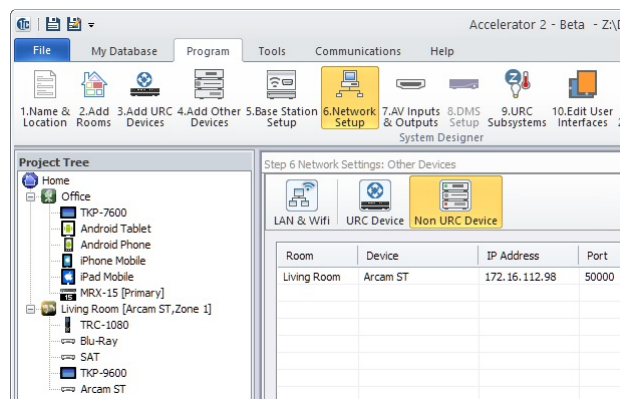
## Configuring the Driver

The driver must be configured to properly support your device.

### IP Address

The IP Address of the Arcam ST60 must be provided to the driver.

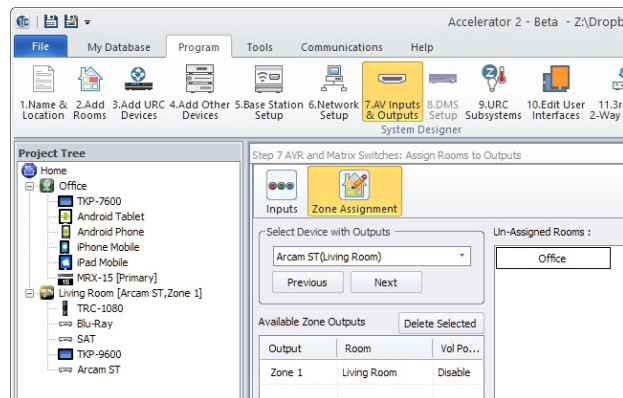
- Choose **Program -> 6. Network Setup**.
- Select **Non URC Device** tab.
- For each instance of the driver, provide the correct **IP address** in the table.
  - Note that the port should be set automatically but for reference the correct port is **50000**



### Zone and Input Assignment

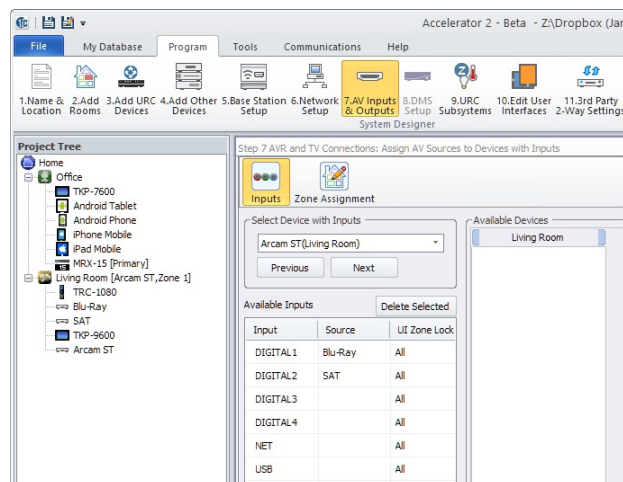
The Arcam ST60 provides support for **1 zone**. This must be assigned to a room in your Accelerator project.

- Choose **Program -> 7. AV Inputs & Outputs.**
- Select **Zone Assignment** tab.
- Drag rooms from the **unassigned rooms** window into the Room column of the **Available Zone Outputs** table.



Devices can also be assigned as inputs to the Arcam ST60:

- Choose **Program -> 7. AV Inputs & Outputs.**
- Select **Inputs** tab.
- Drag devices from the **Available Devices** window into the Source column of the **Available Inputs** table.



## Macros

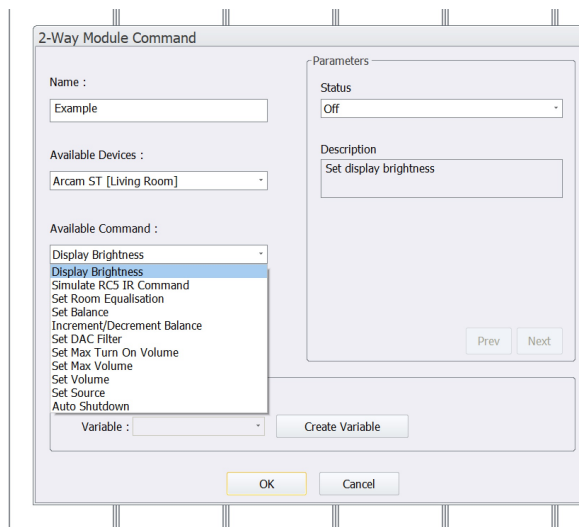
Ensure that system macros are generated for each instance of the driver by configuring **Program -> 12. Macro Editing** appropriately for your system.

## Commands

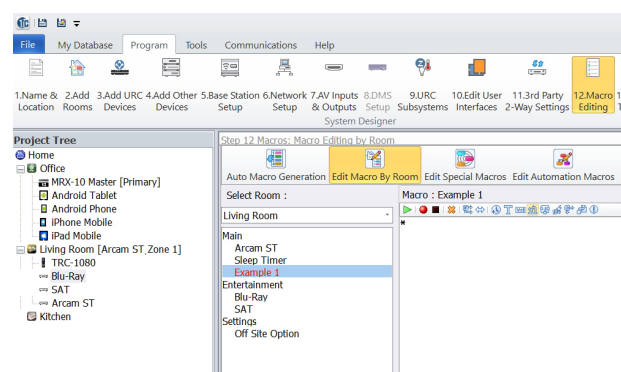
The following commands can be used to control your Arcam ST60 device:

- Display brightness
- Simulate RC5 IR Command
- Room Equalisation
- Balance
- DAC Filter
- Maximum Turn On Volume
- Maximum Volume
- Source
- Auto Shutdown

To add a command to an existing macro select the **Two-way module command** button from the toolbar under **Program -> 12. Macro Editing:**



Give your command a name and select the appropriate command from **Available Command** - see above for the commands available for each model.



Finally, select **OK** to add to your macro.

## Downloading the Driver

Once you have configured the driver using the steps provided above you can now download the revised system configuration to your URC base station.

## User Interfaces

The driver package includes pre-designed interfaces for the following devices:

- TRC-820
- TRC-1080
- TDC-7100
- TKP-7500
- TKP-7600
- TKP-5500
- Apple iPhone
- Apple iPad
- Android Phone
- Android Tablet