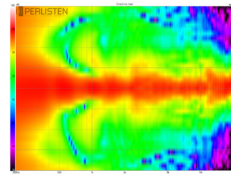
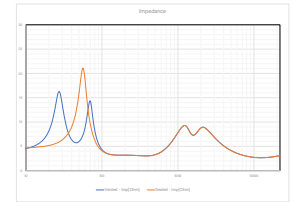


Horizontal Directivity



Vertical Directivity



Impedance

MODEL R5m



TECHNICAL SPECIFICATIONS



Designed to be mounted on optional stand, or mounted to a wall with our tilt swivel bracket. Sharing "trickle-down" technology from our flagship S-Series, the DPC-Array here based on three 26mm domes, guarantees excellent directivity control and timbre matching with all R-Series speakers. The Silk diaphragms developed ground up, chosen specifically their smooth, effortless representation of midrange and treble. The 165mm woofers are made from our proprietary HPF pulp, two years in development, bringing new technology to one of the oldest materials used in loudspeaker design. The R5m can be aligned as bass reflex or acoustic suspension depending on specific tastes. Rich, dynamic bass matched with advanced mid/treble directivity pattern control and silky highs offer best in class performance.

BASIC

Dimensions (HxWxD)
546 x 230 x 336mm
21.5 x 9.0 x 13.2"

Weight
17.5 kg (38.5 lbs.)

Available finishes
High Gloss Black

TECHNICAL

Enclosure Alignment

3-way bass reflex / acoustic suspension

Driver complement

DPC-Array: 26mm(3) Silk dome
Woofers: 165mm(2) HPF diaphragms

Sensitivity

89.2dB / 2.83v / 1.0m

Impedance

4Ω nominal / 2.7Ω min

Response Linearity

80 - 20kHz +/-1.5dB window

Frequency Response (-10dB)

Bass reflex: 40 - 32kHz
Acoustic suspension: 47 - 32kHz

Typical In Room bass extension

Bass reflex: 37Hz
Acoustic suspension: 43Hz

Recommended Amplifier Power

100 - 250W RMS

SPL capability @1m (100-20kHz)

113.2dB peak
111.0dB peak <3% - 2nd, 3rd Harmonics

Certification

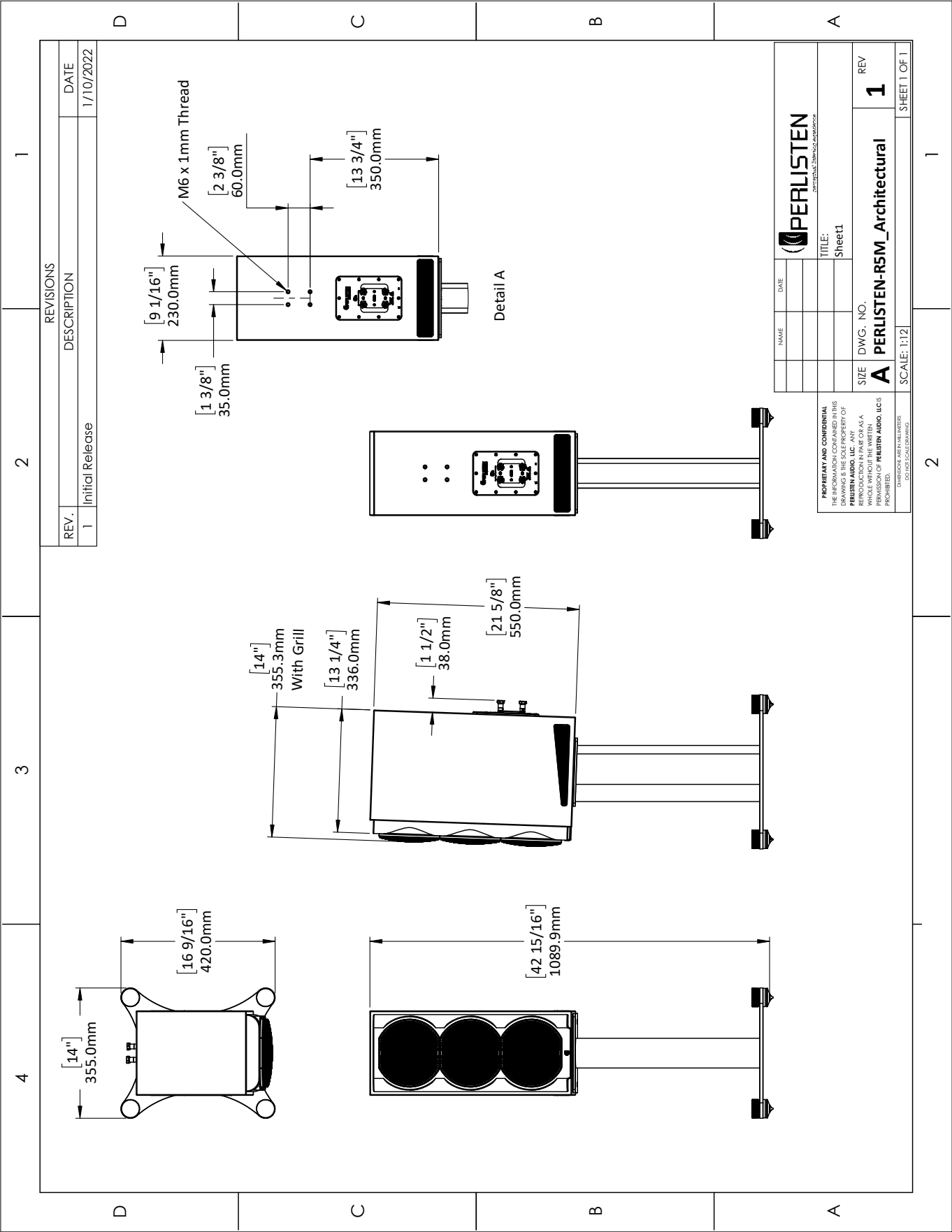
THX Dominus, THX Ultra



DPC Array
Directivity pattern control
*USA Patent pending



HPF (Hybrid Pulp Formulation)
Diaphragms made from mixed long fiber hardwood, bamboo and wool



REVISIONS		DATE
REV.	DESCRIPTION	DATE
1	Initial Release	1/10/2022

NAME	DATE
TITLE: Sheet1	
SIZE	DWG. NO.
A	PERLISTEN-R5M_Architectural
REV	1
SCALE: 1:12	
SHEET 1 OF 1	

PROPRIETARY AND CONFIDENTIAL
 THE INFORMATION CONTAINED IN THIS DRAWING IS THE SOLE PROPERTY OF PERLISTEN AUDIO, LLC. ANY REPRODUCTION OR TRANSMISSION OF PERLISTEN AUDIO, LLC IS PROHIBITED.
 DRAWING AREA IN MILLIMETERS
 DO NOT SCALE DRAWING